

# THE IRISH TERRIER CLUB of AMERICA

Presents

Judges Education Seminar



*Thank you for joining us today!*

## IRISH TERRIER CLUB of AMERICA

<http://itca.info>

### *Judges Education Committee*

- *Mrs. Kelly Wamsler , JEd. Chair*
- *Mrs. Susan Bednar*
- *Mr. Don Brouillette*
- *Mr. Mike Kowalczyk*
- *Mrs. Christine Randle*
- *Ms. Rose Marie Saporito*

### *Irish Terrier Club of America, 2026*

- *Mr. Eduardo Fugiwara , President*
- *Officers and Board of the ITCA*



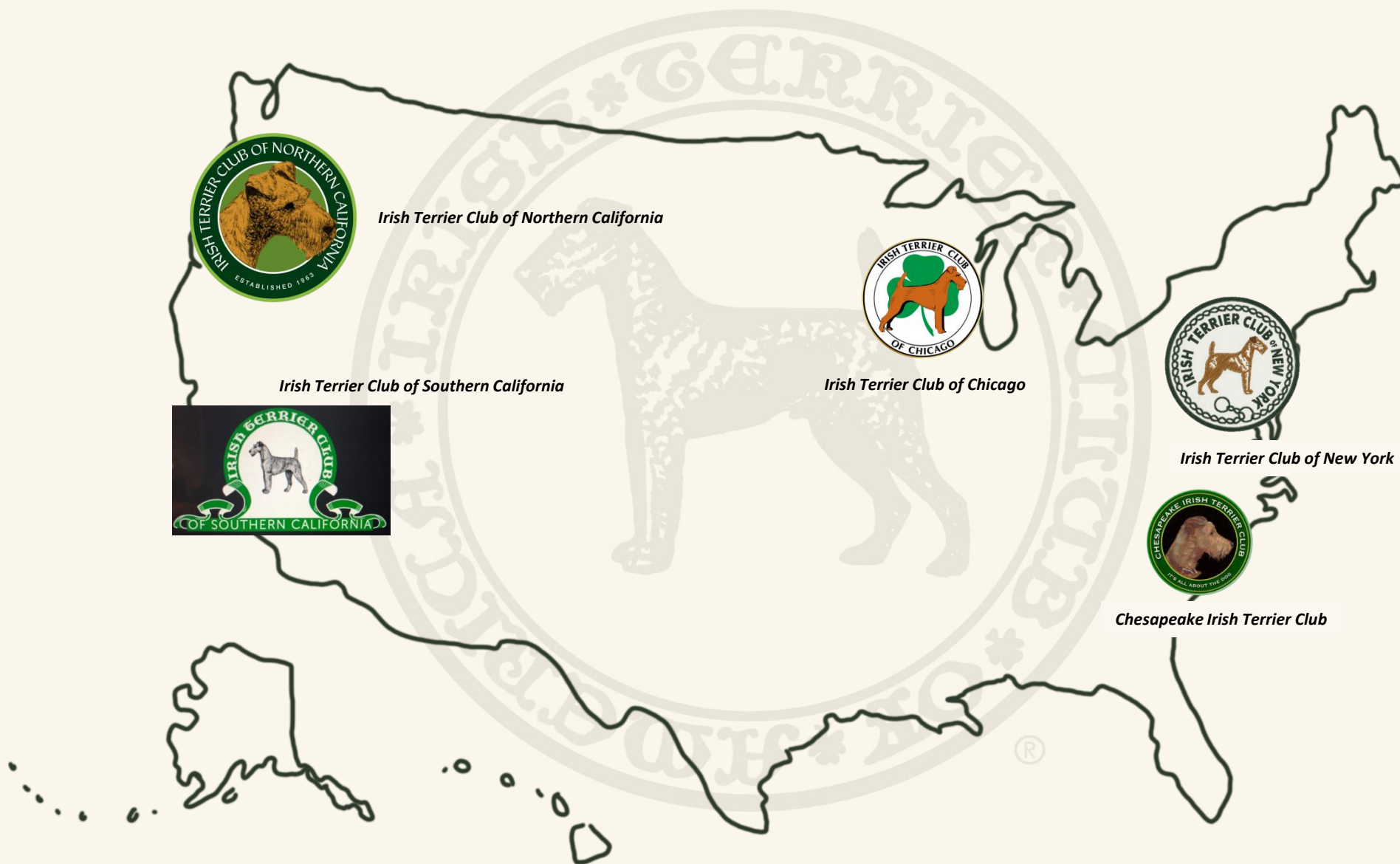


# TOPICS

- *Irish Terrier Regional Clubs*
- *History*
- *Form Follows Function*
- *Examining The Standard*
- *Select your Winner*
- *The Broken Coat*
- *Sparring*
- *Hands-on Exam and Ring Protocol*
- *Wrap Up*
- *Q&A*



# IRISH TERRIER CLUB OF AMERICA w/ REGIONAL CLUBS



*Irish Terrier Club of Northern California*

*Irish Terrier Club of Southern California*

*Irish Terrier Club of Chicago*

*Irish Terrier Club of New York*

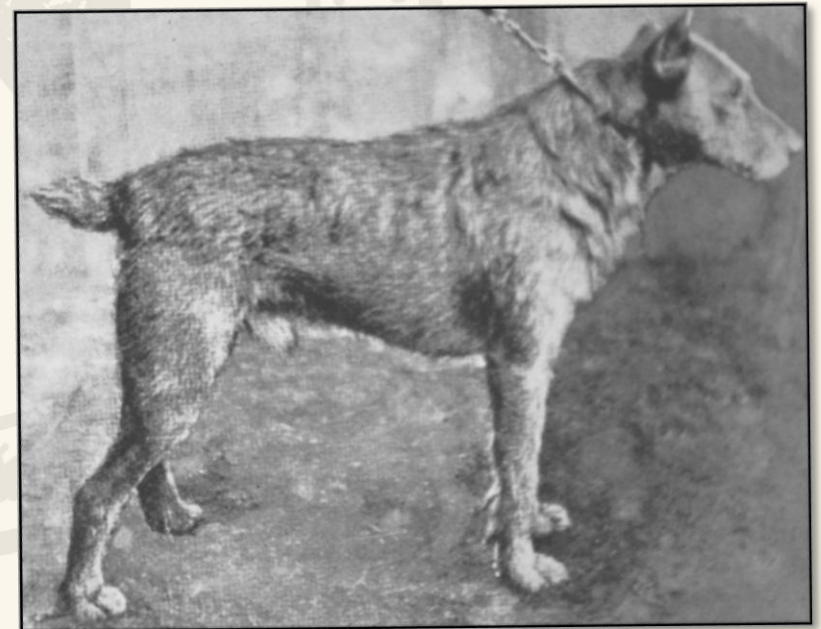
*Chesapeake Irish Terrier Club*



# HISTORY

*“The Battle for Type, 1870 - 1880’s”*

- *Wide variance in type, size and color was problematic. At a special show held in Dublin in 1876 dogs ranged from under 9 to nearly 50 pounds.*
- *The Irish Makes an Impact on both sides of the Atlantic.*
- *1880- Chief battles were over size and cropping.*
  - *25 lbs. and under vs. 30-40 lbs.*
  - *First breed to outlaw cropping; after Dec. 31, 1889 dogs are to be uncropped as they are today.*
- *First scale of points drawn up.*



*Ch. Brickbat 1888*



# 1900's THE BATTLE for TYPE



*Ch. Bolton Woods Mixer – winner of more shows than any Irish before him.*

*Became the “modern” prototype.*

*The Irish Terrier stood third or fourth in numbers at all shows in England and Ireland - behind Fox Terriers, Collies, and the St. Bernard.*

*1897- Formation of the  
Irish Terrier Club of America*



copyright by ITCA 2026 ©

# 1900's

## THE SEARCH for TYPE TRAVELS to AMERICA



- 1917- O'Callaghan joins Lewellyn Powers in partnership of the Aroostook Kennel, Holton, Maine.
- 1919 - Aroostook Aviator is whelped. O'Callaghan resumes using his Kilvara prefix.
- 1932 - Kilvara kennel scaled down. Martha Hall scales up her Ahtram kennel.
- 1956 - 1964 - Push to change type from the Firebrand to the Legacy type.



# 1900-1940's KILVARA



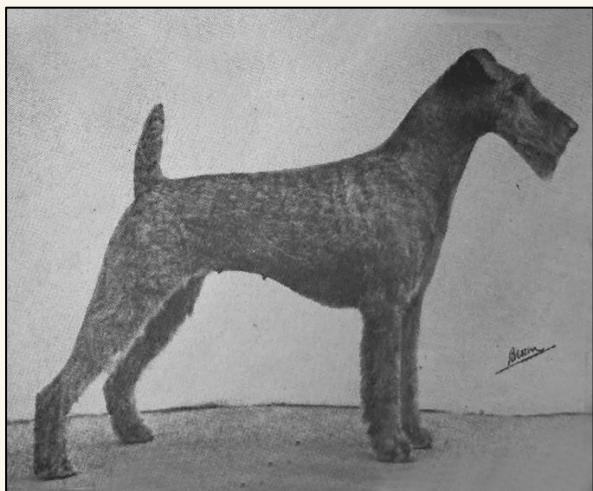
*Jeremiah J. O'Callaghan presenting an Irish Terrier puppy to Joe Cronin, Boston Red Sox player-manager. Opening day at Fenway Park, mid-1930's.*



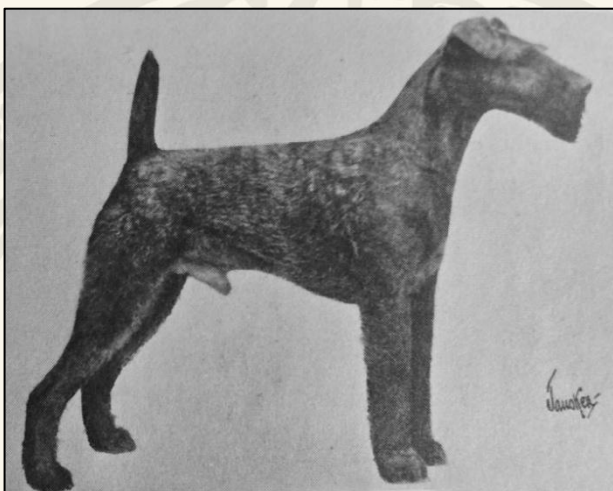
*Aroostook Aviator, whelped in 1919, became the foundation sire of O'Callaghan's Kilvara bloodline. One Hundred years later Aviator remains the tail-male of American-bred Irish Terriers.*



# 1940's – 1960's MOST ICONIC IRISH TERRIERS



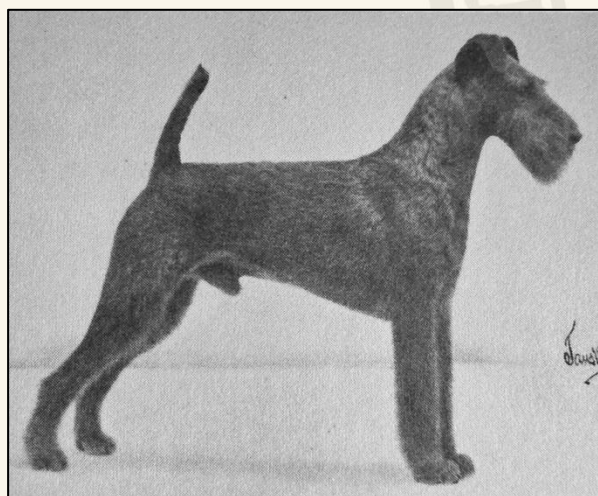
*Ch. Another Norah - 1941*



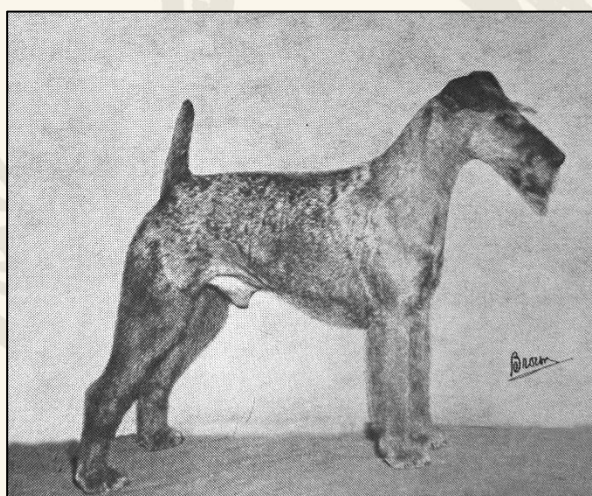
*Ch. Kilvara Magic Master - 1945*



*Ch. Ahtram Firebrand - 1945*



*Ch. Ahtram Sure Fire - 1952*



*Ch. Wahoo Satellite - 1956*



*Ch. Ballinruan Belle - Imp. 1961*



# 1950-1960's MARTHA HALL'S LEGACY

- *O'Callaghan and Hall were determined to improve Irish Terriers.*
- *They noted that Goswyre Music Man had produced pups that exhibited better shoulders and more reach of neck.*
- *His son, Ahtram Legacy exemplified these qualities and his impact on the breed is still felt today.*



*Ch. Ahtram Firebrand - 1956*  
*Legacy's Grandsire*



*Ch. Goswyre Music Man - 1957*



*Ch. Ahtram Legacy - 1962*



# 1964-1975

## THE BEGINNING and END of the BEST in SHOW DROUGHT

- *From Green Star Gold Strike's BIS award at Perkiomen Valley in '64, no Irish Terrier won a BIS until Glannagalt Now Peace prevailed at Klamath Falls in Sept. '75.*



*Ch. Green Star Gold Strike –1964*



*Ch. Glannagalt Now Peace – 1975*



# A BRIEF HISTORY of the IRISH TERRIER

*"Form follows Function"*



*Champion Mile End Barrister*



copyright by ITCA 2026 ©

# “FORM FOLLOWS FUNCTION”



*The Irish Terrier was bred to be an all around farm dog serving many purposes. Hunting was an important function. The Irish was expected to go for all kinds of game including rabbit, fox, badger, hedgehogs, rats and otters. This required the dog to have stamina to endure long days in the field and speed to be able to catch their prey. So the structure of the dog must support those requirements. Going to ground is not one of its functions.*



# “FORM FOLLOWS FUNCTION”



*The head of the Irish is designed to provide it with strength and tenacity. As the Irish was often called upon to go after game that was much larger than itself, it had to have the ability to grab onto the vermin and hold onto it. The ears were originally cropped to protect the dog when it was used in dog fights. When ear cropping was banned the standard still specified that the ears be small and placed in such a way as to offer protection from an attacking dog or vermin as well as from infections. The hard and wiry coat is intended to serve multiple functions. It offers warmth in the often cold and wet Irish environment. It enables the dog to go into water after vermin and quickly dry off when it emerges. The harsh coat also acts as an armor enabling to Irish to hunt in the most dense and thorny thickets. The color is to enhance the dog's visibility when on the hunt. The ideal size of an Irish Terrier evolved over time. The current standard reflects several requirements. There is an old saying that the farmer when out on a hunt should be able to carry their gun under one arm and their Irish under the other. Next, the dog needs to be able to get into low thickets to flush out vermin like rabbits. Finally, when on a hunt the dog must be visible at a distance but low enough to enable the hunter to easily shoot over it.*

*- By ITCA Club Historian Mike Kowalczyk*



# EXAMINING the STANDARD

<i>Head</i> .....	16-22
<i>Eyes</i> .....	23-24
<i>Ears</i> .....	25-26
<i>Nose</i> .....	27
<i>Teeth</i> .....	27
<i>Neck</i> .....	28
<i>Shoulders and Chest</i> .....	28
<i>Body</i> .....	29-30
<i>Hindquarters</i> .....	31
<i>Stern</i> .....	32
<i>Feet and Legs</i> .....	33-35
<i>Coat</i> .....	36-40
<i>Color</i> .....	41
<i>Size</i> .....	42
<i>General Appearance</i> .....	43-44
<i>Temperament</i> .....	45

*The Standard recognizes*  
**No Disqualifications**



# THE HEAD



*Life size Irish Terrier head study in Bronze 1998-Ellis West*

*“Long, but in a nice proportion to the rest of the body; the skull flat, rather narrow between the ears, and narrowing slightly toward the eyes; free from wrinkle, with the stop hardly noticeable except in profile.”*

*(Skull is flat and slightly wedge shaped)*



# THE HEAD



*“The jaws must be strong and muscular, but not too full in the cheek, and of good punishing length.”*



*“The foreface must not fall away appreciably between or below the eyes; instead, the modeling should be delicate.”*



# THE HEAD



*“The foreface and the skull from the occiput to stop should be approximately equal in length.”*



*“The ‘bumpy’ head, in which the skull presents two lumps of bony structure above the eyes, is to be faulted.”*



*“Excessive muscular development of the cheeks, or bony development of the temples, conditions described by the fancier as ‘cheeky’ or ‘strong in head,’ or ‘thick in skull’ are objectionable.”*

*(The zygomatic arch)*



# RANGE of HEAD STRENGTH



# THE HEAD



*The back skull and the muzzle should be approximately equal in length.*



*“The skull flat, rather narrow between the ears, and narrowing slightly toward the eyes; free from wrinkle.”*



*“The stop hardly noticeable except in profile.”*

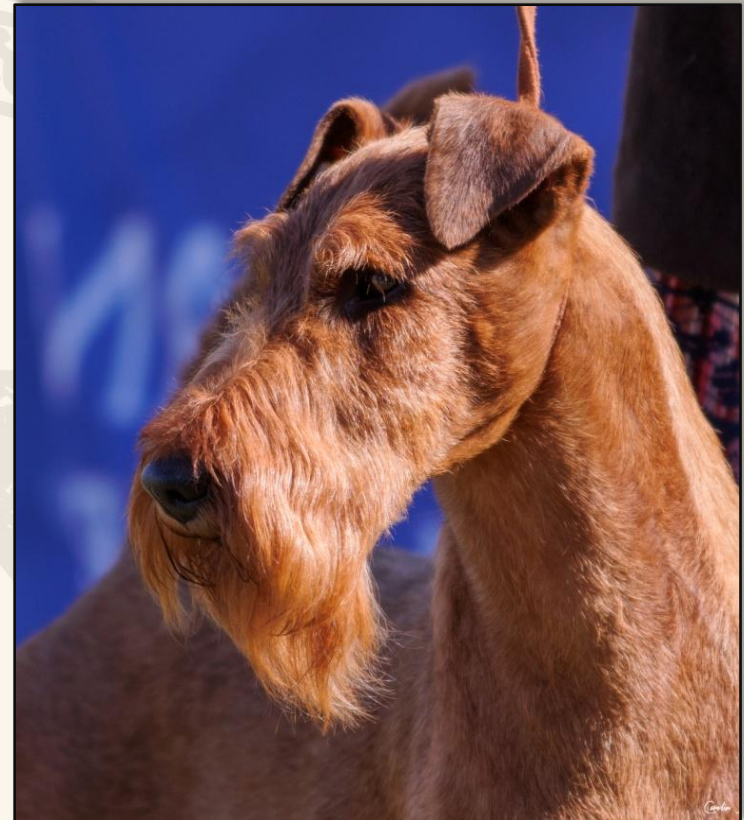


# THE HEAD

*"Hair and Furnishings on Face"*



*"The hair on the upper and lower jaws should be similar in quality and texture to that on the body, and of sufficient length to present an appearance of additional strength and finish to the foreface."*



*"Either the profuse, goat-like beard, or the absence of beard, is unsightly and undesirable."*



# HEAD and EXPRESSION



*“Expression plays a major role in defining **TYPE** in Irish Terriers.  
The ‘hard-bitten’ expression so valued by long-time terrier breeders.”*



# THE SMALL EYE

*The vaunted “hard-bitten” expression depends on the small eye.  
It is increasingly rare.*

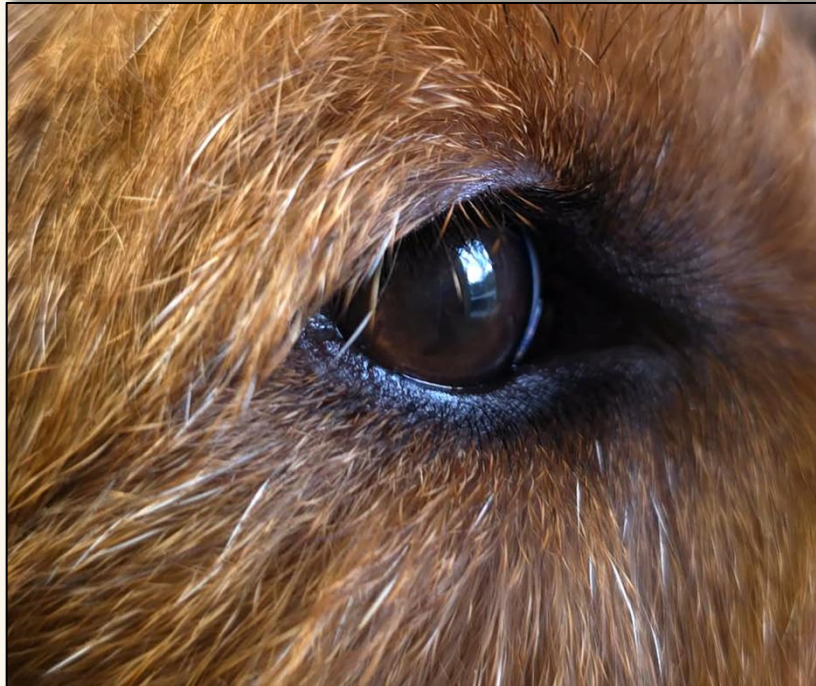


*Expression plays a major role in defining type in Irish terriers. It has been described as keen and wicked, intense, hard bitten, and the varmint-like look of devil-may-care.*

*Some judges describe it as “the dog looked right through me.”*



# EYES



*Bad fault - Light or yellow eyes*

**EYES** – “Dark brown in color small, not prominent; full of life, fire and intelligence, showing an intense expression.”

**“The light or yellow eye is most objectionable, and is a bad fault.”**



# EARS



*Good ear and placement pointing to the outside corner of the eye.*



*This ear is a very large ear with no lift, disturbing the typical expression of a Irish Terrier.*

- *Small and V-shaped; of moderate thickness; set well on the head, and dropping forward closely toward the outside corner of the eye.*
- *The top of the folded ear should be well above the level of the skull.*
- *A “dead” ear, hound-like in appearance, must be severely penalized. It is not characteristic of the Irish Terrier.*
- *The hair should be much shorter and somewhat darker in color than that on the body.*



# EXAMPLES of EAR CARRIAGE



*Tip above outside corner of eye,  
fastened low*



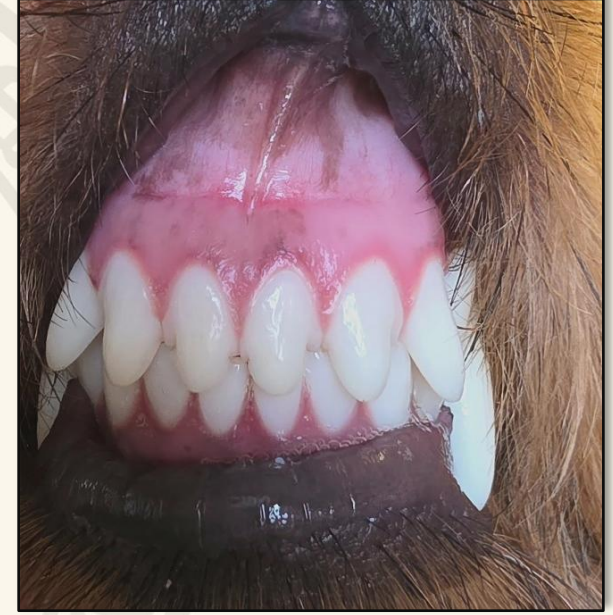
*Tip in middle of eye*



*Hound Ear – must be  
severely penalized*



# NOSE, TEETH and LIPS



- **NOSE** –Must be black.
- **TEETH** - Strong, even, white and sound. Neither overshot nor undershot.
- Either the scissors bite or level bite is acceptable
- **BITE Exam:** “FRONT Only.”
- **LIPS** –Should be close and tight fitting. Almost black in color.



# NECK

# SHOULDERS and CHEST



*“Should be of fair length and gradually widening toward the shoulders; well and proudly carried, and free from throatiness.”*

*“Generally there is a slight frill in the hair at each side of the neck, extending almost to the corner of the ear.”*

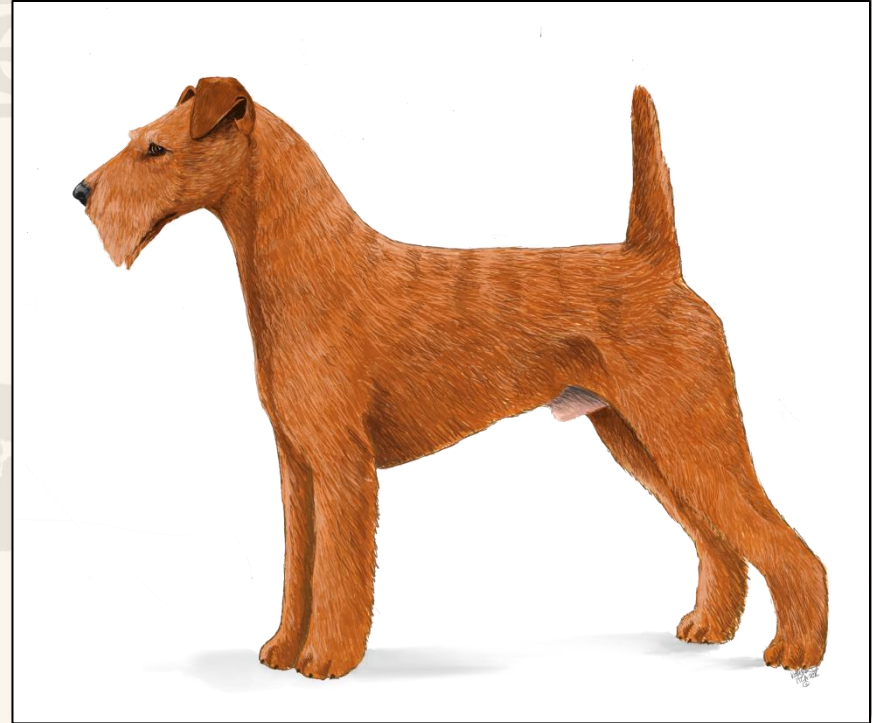


*“Shoulders must be fine, long, and sloping well into the back.”*

*“The chest should be deep and muscular, but neither full nor wide.”*



# THE BODY



*“The Body should be moderately long. The short back is not characteristic of the Irish Terrier, and is extremely objectionable. The back must be strong and straight, and free from an appearance of slackness or ‘dip’ behind the shoulders. The loin should be strong and muscular, and slightly arched, the ribs fairly sprung, deep rather than round, reaching to the level of the elbow. The bitch may be slightly longer than the dog.”*



# THE BODY



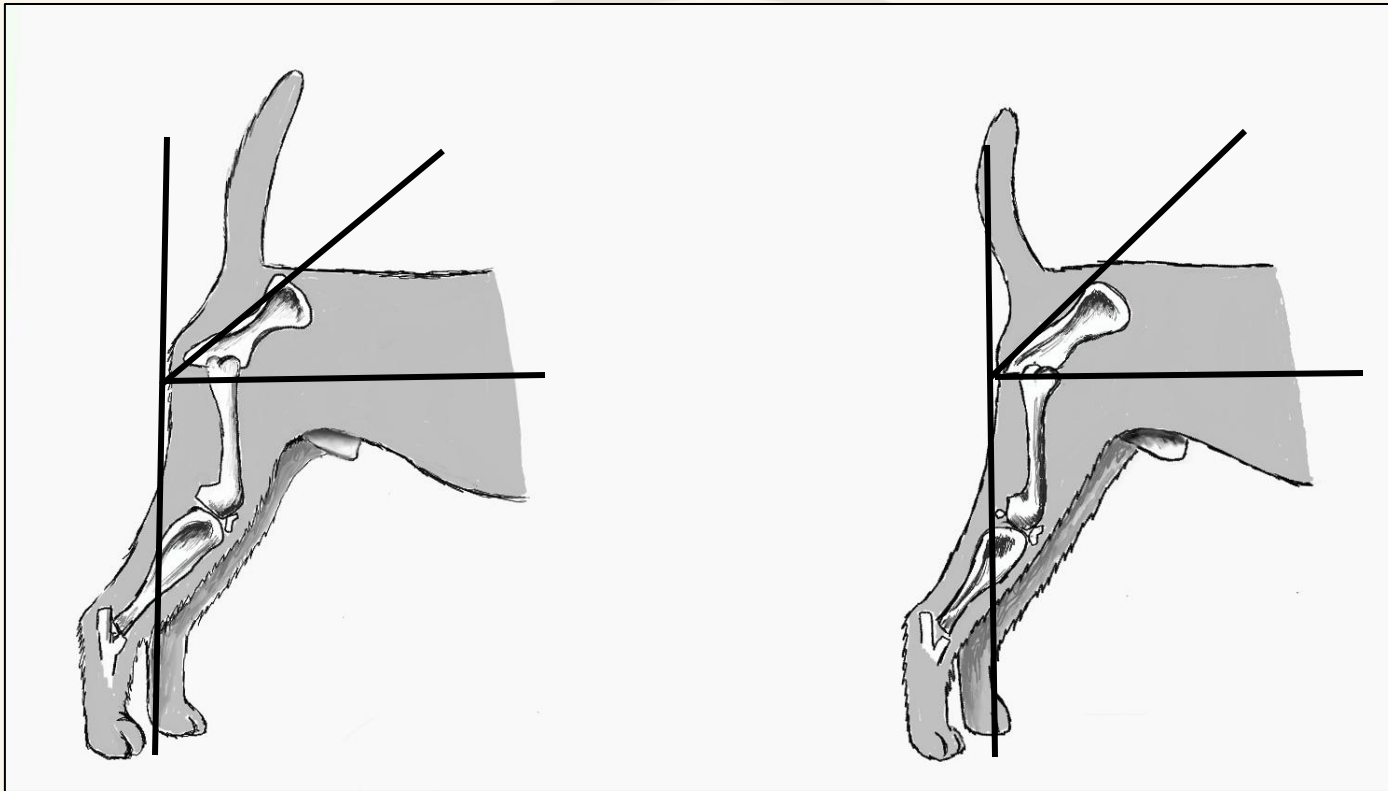
*Chest down to the elbow, some pro-sternum visible, long rib, short loin, gradual tuck-up, level top-line, shoulders let in.*



*Lacking moderate length, shorter backline, heavier at shoulder not clean, lacks tuck-up. ®*



# HINDQUARTERS



*Properly constructed hindquarters.  
Moderately bent stifle and good tail set.*

*Poorly constructed hindquarters.  
Straight stifle and low tail set.*

*“Should be strong and muscular; thighs powerful;  
hocks near the ground; stifles moderately bent.”*



# STERN



*Stern: should be set on high without falling away. The profile of the dog should be a continuous flowing line from the neck to the base of the tail. Placement permits some pelvic bone to project behind.*



*Tail is set below the level of the topline, curved carriage pulls the tail too far forward.*

*“Should be docked, taking off about one quarter. It should be set on rather high, but not curled. It should be of good strength and substance; of fair length and well covered with harsh, rough hair.”*



# FEET and LEGS



*Corny feet  
(hyperkeratosis)*

*“The feet should be strong, tolerably round, and moderately small; toes arched and turned neither out nor in, with dark toenails. The pads should be deep, and must be perfectly sound and free from corns. Cracks alone do not necessarily indicate unsound feet. In fact, all breeds have cracked pads occasionally, from various causes.”*

***Judges in the show ring should check the pads for corns, which will appear as horn-like growths – a very serious fault!***



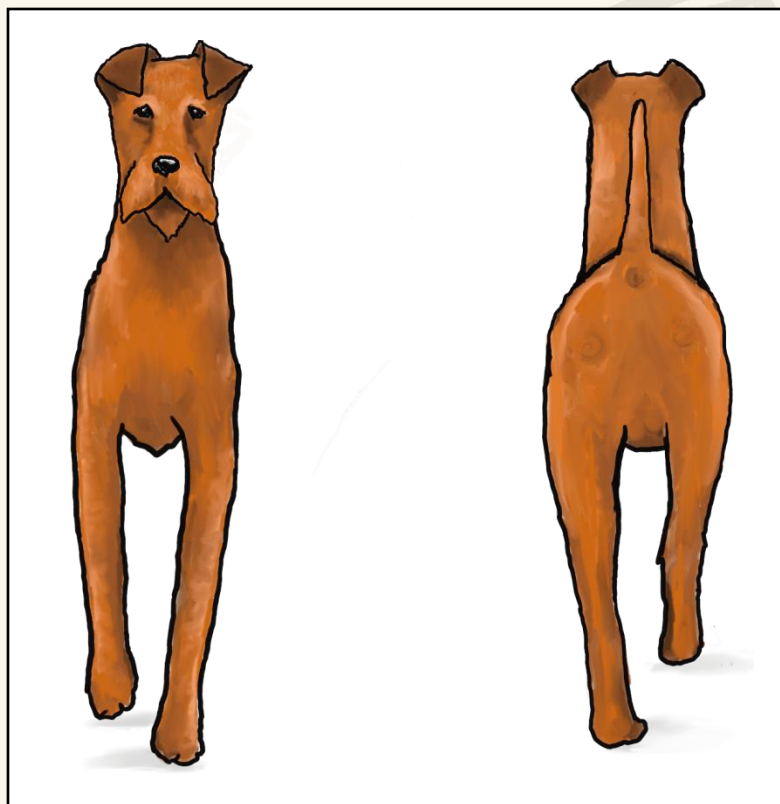
# LEGS



*“Legs moderately long, well set from the shoulders, perfectly straight, with plenty of bone and muscle; the elbows working clear of the sides; pasterns short, straight and hardly noticeable. Both fore and hind legs should move straight forward when traveling; the stifles should not turn outwards. ‘Cow-hocks’ - that is, the hocks turned in and the feet turned out - are intolerable. The legs should be free from feather and covered with hair of similar texture to that on the body to give proper finish to the dog.”*

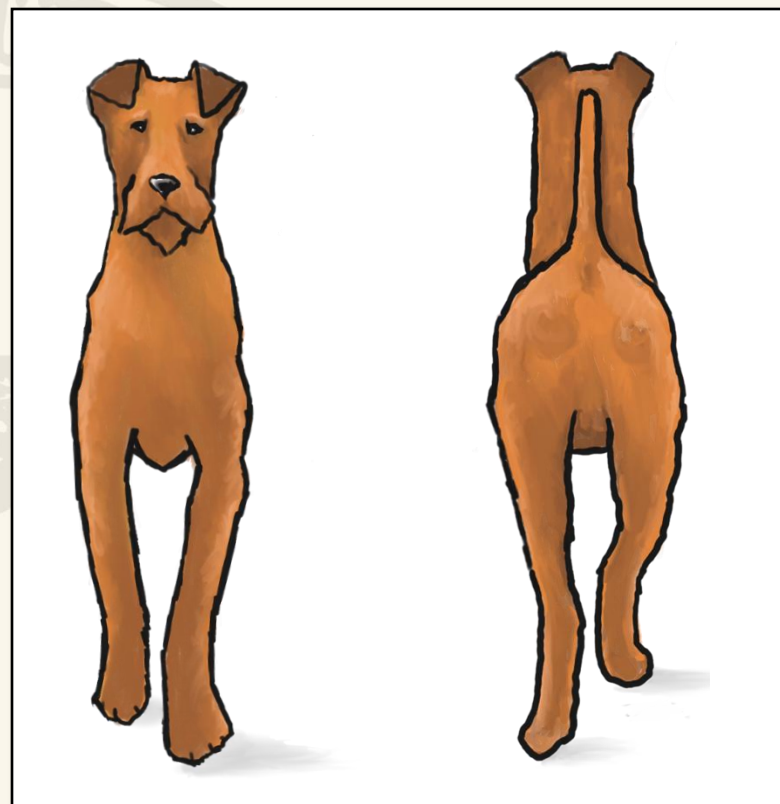


# FEET and LEGS



*Correct front movement*

*Correct rear*



*Incorrect front movement*

*Incorrect rear*

*("Cow-hocks")*

*"Both fore and hind legs should move straight forward when traveling; the stifles should not turn outward. 'Cow-hocks' – that is, the hocks turned in and the feet turned out – are intolerable."*



# THE COAT



*“Should be dense and wiry in texture, rich in quality, having a broken appearance, but still lying fairly close to the body, the hairs growing so closely and strongly together that when parted with the fingers the skin is hardly visible; free of softness or silkiness, and not so long as to alter the outline of the body, particularly in the hindquarters. On the sides of the body the coat is never as harsh as on the back and quarters, but it should be plentiful and of good texture. At the base of the stiff outer coat there should be a growth of finer and softer hair, lighter in color, termed the undercoat. Single coats, which are without any undercoat, and wavy coats are undesirable; the curly and the kinky coats are most objectionable.”*



# THE BROKEN COAT



- *Dense and wiry in texture, rich in quality, broken appearance.*
- *A tight-fitting coat that protects the dog from water and brush.*
- *Hair grows in an arc that forces the tip back into the body of the dog.*
- *The words “straight” or “flat” never appear in the Standard.*
- *Wavy coat grows away from the body of the dog.*
- *Curly coat hair grows in a spiral shape.*



*Originally written for the German publication Der Terrier.  
Revised for the AKC breed column, and an ITCA breeding seminar.*



# VARIATIONS of THE BROKEN COAT



# THE CURLY COAT

("Kinky")

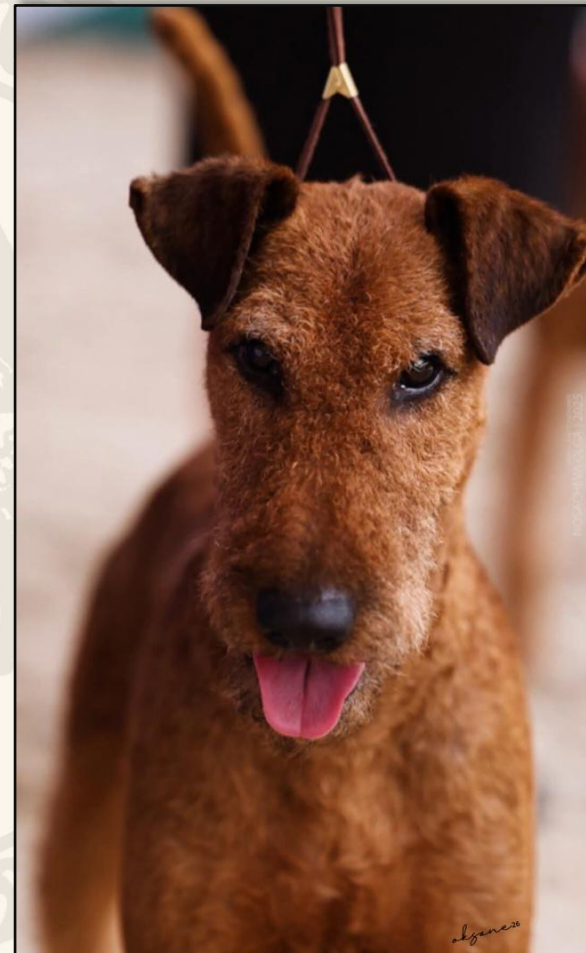


*"This coat is as a rule found on dark red specimens. It is a very harsh forming tight rows of curls on the back of the neck, devoid of not only undercoat, but of leg and face furnishings."- Dr. Montgomery*



# THE CURLY COAT

*("Kinky")*



*"The curly coat and the kinky coats are most objectionable."*



# COAT COLOR



*"Red"*



*"Golden Red"*



*Sm. White on Chest*

*"Should be whole colored: bright red, golden red, red wheaten, or wheaten. A small patch of white on the chest, frequently encountered in all whole-colored breeds, is permissible but not desirable. White on any other part of the body is most objectionable. Puppies sometimes have black hair at birth which should disappear before they are full grown."*



# SIZE



*(Correct size and condition of a adult female. )*



*(Correct size and condition of a adult male. )*

*“The most desirable weight in show condition is 27 pounds for the dog and 25 pounds for the bitch. The height at the shoulder should be approximately 18 inches. These figures serve as a guide to both breeder and judge. In the show ring, however, the informed judge readily identifies the oversized or undersized Irish Terrier by its conformation and general appearance. Weight is not the last word in judgment. It is of the greatest importance to select, insofar as possible, terriers of moderate and generally accepted size, possessing the other various characteristics.”*



# GENERAL APPEARANCE



*"Ideal" physique*

*"The overall appearance of the Irish Terrier is important. In conformation he must be more than a sum of his parts. He must be all-of-a-piece, a balanced vital picture of symmetry, proportion and harmony. Furthermore, he must convey character. This terrier must be active, lithe and wiry in movement, with great animation, sturdy and strong in bone structure, but at the same time the same time free from clumsiness, for speed, power and endurance are most essential."*



# GENERAL APPEARANCE



*"Cobby" physique*



*"Cloddy" physique*

*"The Irish Terrier must be neither 'cobby' nor 'cloddy' but should be built on lines of speed with a graceful, racing outline."*



# TEMPERAMENT



*“The temperament of the Irish Terrier reflects his early background: he was family pet, guard dog, and hunter. He is good tempered, spirited and game. It is of the utmost importance that the Irish Terrier show fire and animation. There is a heedless, reckless pluck about the Irish Terrier which is characteristic, and which, coupled with the headlong dash, blind to all consequences, with which he rushes at his adversary, has earned for the breed the proud epithet of ‘Daredevil.’ He is of good temper, most affectionate, and absolutely loyal to mankind. Tender and forbearing with those he loves, this rugged, stout-hearted terrier will guard his master, his mistress and children with utter contempt for danger or hurt. His life is one continuous and eager offering of his loyal and faithful companionship and devotion. He is ever on guard, and stands between his home and all that threatens.”*



# SELECT YOUR WINNER



*The best dog judges all have one thing in common ... the ability to identify breed type with the first look at a dog. The goal of this presentation is to guide you along the correct path to doing this with Irish Terriers. Discussion will focus on the outline, head, coat, movement and temperament that defines breed type in Irish Terriers. With only two minutes per dog, judging a large entry of any rare breed is a big challenge. Let's step into the ring and show you how to best use your time.*



# CLASS DOGS 1



A



B



C



D



# CLASS DOGS 2

A



B



C



D



# CLASS BITCHES 1



A



B



C



D



# CLASS BITCHES 2



A



B



C



D



# BEST OF BREED - DOGS



A



B



C



D



# BEST OF BREED - BITCHES



# SPARRING IRISH TERRIERS



*"It is of the utmost importance that  
the Irish Terrier show fire and animation."*



# SPARRING IRISH TERRIERS

**IT MAY BE OPTIONAL FOR OTHER BREEDS, BUT NOT FOR THE IRISH.**

*If you're new to judging terriers, you may be furrowing your brow and wondering what is going on when the judge pulls out several dogs, asks their handlers to let them look at one another, and the dogs then begin to take on a combative attitude for a few moments.*

## **WHAT IS SPARRING?**

*It is a controlled confrontation between dogs which provides an opportunity to evaluate either a heightened aesthetic view of the dogs, or a test of one of their essential character qualities, namely their will to dominate.*

*In the context of showing dogs a brief definition is:  
"to gesture without landing a blow."*



*Link to The Art of Sparring Terriers*



# SPARRING IRISH TERRIERS



## **WHY WOULD ANYBODY DO THIS?**

*The two principal reasons are:*

- 1. either to arouse the dog so that he will display himself to his greatest physical advantage, or*
- 2. to test the dog's inclination to project his will to dominate other animals. The desired attitude for an Irish terrier is described in the standard under Temperament:*

*"It is of the utmost importance that the Irish Terrier show fire and animation. There is a heedless, reckless pluck about the Irish Terrier which is characteristic, and which, coupled with the headlong dash, blind to all consequences, with which he rushes at his adversary, has earned for the breed the proud epithet of 'Daredevil.'"*



# SPARRING IRISH TERRIERS



## **WHEN TO SPAR-**

*As part of the regular class judging...after the hands-on and gaiting have been evaluated.*

## **HOW? WHAT'S THE DRILL?**

*Select the way in which you will pair your choices.*

*Pick pairs close in quality – putting a good dog against a klunker is cruel. How close should you stand them? For some dogs another dog in the same state is too close.*



# SPARRING the CHALLENGE



*Three males spar.*

## ***“ROMEO AND JULIET”***

- *The bitch may look good when she flirts, but few save the crazy or battle-hardened will try to dominate a male.*

## ***“THE GANG”***

- *Placing a half-dozen ticked-off Irish males in the middle of a ring encircled by other IT's is very dramatic, but is also for the experienced judge.*

## ***“OLYMPUS”***

- *Bring out your superstar and then one at a time bring out your pretenders. Hope your star doesn't crumble!*



# HANDS ON and RING PROTOCOL



***IRISH MAY BE JUDGED ON A RAMP OR THE GROUND- Judges discretion.***

***BITE EXAM – Front only !***



# HANDS ON and RING PROTOCOL



## **SET-UP**

1. *Allow the first dog to set-up.*
2. *Confidently Approach dog from the front – Greet the handler and dog.*
3. *“Assess then Address” each dog as you approach.*
4. *Is the dog harboring an attitude due to the dog behind it?*
5. *Do not be tentative with them. They appreciate a smooth hand.*
6. *Have your hand out to allow a sniff and begin your exam.*

## **HANDS-ON EXAM**



# HANDS ON and RING PROTOCOL



## ***HEAD and EXPRESSION***

- ***HEAD*** - Wedge shaped.
- ***SKULL*** - Flat.
- ***BACK-SKULL and MUZZLE*** - approximately equal.
- ***MUZZLE*** - Strong, with clean cheek.
- ***EYE*** - Small, dark brown.
- ***EARS*** - Small, well set, point to eye; frame the face.
- ***BITE*** - Neither overshot nor undershot. Bite Exam – Front only.



# HANDS ON and RING PROTOCOL

## LENGTH

- The overall horizontal length from the forward point of the pro-sternum to the rear projection of the pelvic bone shall be greater than the vertical distance from the bottom of the foot to the top of the shoulder.
- The bitch may be slightly longer than the dog.
- Key characteristic is the rib cage-neither full nor wide, but deep, with a well-defined tuck. The ribs should be  $\frac{2}{3}$ <sup>rds</sup> of the distance from the back of the shoulder muscle to the head of the pelvis. The loin should be  $\frac{1}{3}$ <sup>rd</sup> of the distance from the last floating rib to the head of the pelvis.
- Proper outline.

## SIZE

- *It is of the greatest importance to select, insofar as possible. Terriers of **MODERATE** and generally accepted size, possessing the other various characteristics.*



# HANDS ON and RING PROTOCOL



## COAT

- *Inspect the coat and color. Use your thumb to brush the coat backward to check for stiffness and undercoat. Then use entire hand to brush the coat in the direction it grows to feel harshness and tight knit.*
- *Dense and wiry.*
- *Hairs are denser and harsher on the back, top of quarters, and base of the neck.*



# HANDS ON and RING PROTOCOL



- **SHOULDERS** - well laid into the back; not loaded.
- **LOIN** - muscular, slightly arched.
- **PELVIS** - somewhat level rather than steep.
- **QUARTERS** - muscular, moderately angulated.
- **STIFLE** - moderately turned.
- **HOCKS** - well let down.
- **FEET** - Strong, tolerably round, moderately small.  
Check for corny feet.
- **TAIL** - Should be docked. Should be set rather hi, but not curled. The length of the tail should balance with the length of neck.
- Check testicles.

**NOTE** - Grooming techniques create the appearance of a level top line, the rise in the lion dictated by the underlying musculature will be felt by hands-on examination.



# HANDS ON and RING PROTOCOL



## **FINAL POINTS**

- *Give the dog a friendly pat and ask the handler to move the dog, as desired.*
- *Quick view of the rest of the class.*
- *Note what the handlers are up to :*
  - ✓ *Crowding one another?*
  - ✓ *Dog turned around backwards, facing the dog behind him?*
- *Don't be shy about asking handlers to turn their dogs around. You'll appreciate holding down the temperature of the class when it comes to sparring.*



# THE WRAP UP

**HEADPIECE** - Choose a strong, clean, angular wedge head, focused by the ears.

- We want a varmint-like expression.

Get the **LENGTH** right.

- Ribs moderately sprung, heart shaped, deep with 2/3rds of the length from the back of the shoulder to the head of the pelvis.
- Proper outline.

**COAT** - The Broken Coat: Dense, wiry.

**SIZE** - Give some value to correct size when possible.

**FOR EXTRA CREDIT - SPAR** the dogs.





# IRISH TERRIER CLUB of AMERICA

<http://itca.info>

Our Judges Education

<http://itca.info/judges-education/>

- *Irish Terrier Breed Mentor list*
- *Sparring the Irish*

References:

- *Official Standard for the Irish Terrier, December 1968*
- *ITCA Breed book(s): 1928, 1948, 1970, 1997*
- *The Irish Terrier, George Kidd*
- *The Irish Terrier, 5<sup>th</sup> Ed., F.M. Jowett*
- *The Complete Irish Terrier, Dr. E. S. Montgomery*

*The 2026 ITCA Judges Education Committee would like to thank all the owners, breeders and photographers for their contributions to this project.*

